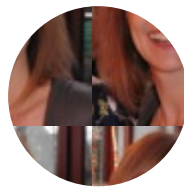


July 16, 2022

EM186: Management of People with Nerve related MSK conditions



COLETTE RIDEHALGH

BSc, MSc, PhD

The aim of this course is to present the most recent evidence and theory on the assessment and management of people who have musculoskeletal problems with more common neural components. The course aims to develop practical skills and clinical reasoning by the participants when dealing with people in these conditions.

The theoretical aspects of the course will include an overview of the patho-physiological mechanisms underlying these disorders, and will consider the latest evidence from in vivo and laboratory studies. We will discuss the application of clinical tests to evaluate people with these disorders and to better understand their role in identifying these pathologies or the specific pathological-mechanical aspects that may be at the root of the problem. In addition, the validity and repeatability of these tests will be discussed. Participants will practice and receive feedback from the teacher and also from colleagues, to optimize their skills.

In the final part of this course we will discuss the possibilities of managing patients with musculoskeletal problems with neural components. Clinical cases will be used to help participants plan and develop appropriate management techniques. There will again be a review of practical skills with feedback from the teacher and colleagues, to improve these skills.

By the end of the course, participants will understand the potential mechanisms underlying musculoskeletal problems with neural components, and how to evaluate these mechanisms using clinical tests. Participants will develop their clinical skills in both assessment and management techniques and will have acquired an appropriate clinical reasoning process for the use of these techniques.

Course Objectives:

By the end of the course the participants

- They will have developed knowledge on the epidemiology and pathological mechanisms associated with musculoskeletal disorders with neural components.

Will be able to understand, relate to, interpret and perform clinical tests appropriate for people with nerve-

related musculoskeletal problems

They will be able to understand the current evidence for the efficacy and therapeutic effects of management strategies for people with these problems

They will have developed clinical reasoning to be able to plan and implement management techniques and monitor outcomes for people with these disorders.



30 Seats



€402.60



16 Hours



18,4 ECM

INTENDED FOR

Doctors, Physiotherapists Deposit €201.30 within 7 days from the registration

Balance €201.30 by date June 17, 2022

Total: €402.60

PAYMENTS

CALENDAR

16-17 July 2022

LANGUAGE

English with Italian continuous translation

COURSE LOCATION: BRESCIA @ Edumed . Formazione ECM

Course organised in cooperation with "MOVE - PHYSIOTHERAPY"

SCHEDULE

DAY 1

08.30 - 08.45 Participant registration

08.45 - 09.20 Introduction

09.20 - 10.30 Epidemiology and introduction to musculoskeletal pathologies with most commonly neural components

encountered. Pathomechanisms

10.30 - 10.40 Coffee break

10.40 - 12.30 Pathomechanisms in relation to presentation

12.30 - 13.15 Lunch break

13.15 - 14.30 Clinical Tests - psychometric theory and properties

- Neurological examination
- Test for increased mechano-sensitivity of the nerve

14.30 - 15.30 Practice - neurological examination

15.30 - 15.35 coffee break

15.35 - 17.45 Practice - neurodynamic tests

DAY 2

8.30 - 09.00 Day 1 Recap

09.00 - 10.30 Management strategies - discussion and overview.

Mechanisms associated with commonly used interventions for component musculoskeletal problems
neural

10.30 - 10.40 Coffee break

10.40 - 12.30 Management: effectiveness of management strategies of people with MSK problems with nerve components.

12.30 - 13.15 Practical session of neural gliding techniques

13.15 - 14.00 Lunch break

14.00 - 15.00 The practical session on neural gliding and interface techniques continues

15.00 - 15.30 Clinical cases and planning of management strategies

15.30 - 15.35 Coffee break

15.35 - 16.30 Clinical cases and practical skills

16.30 - 17.30 Final summary, questions and ECM tests